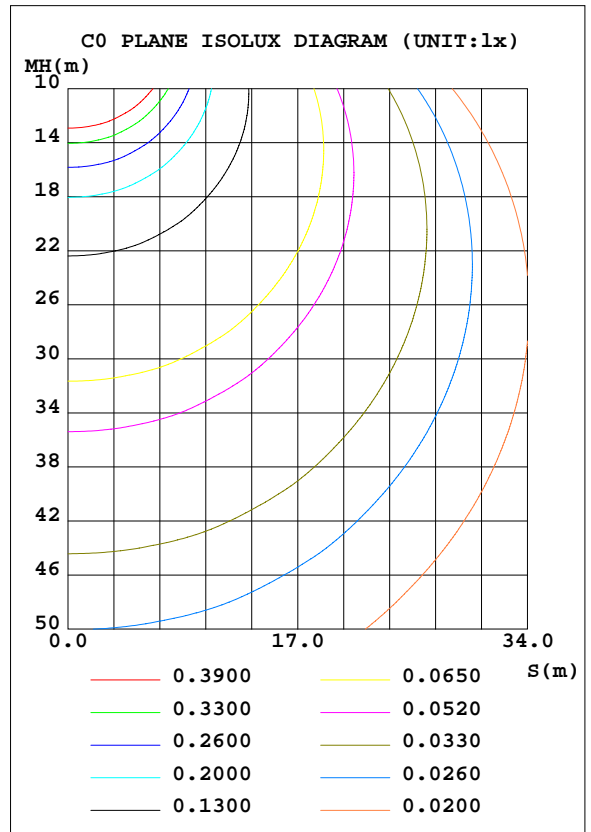
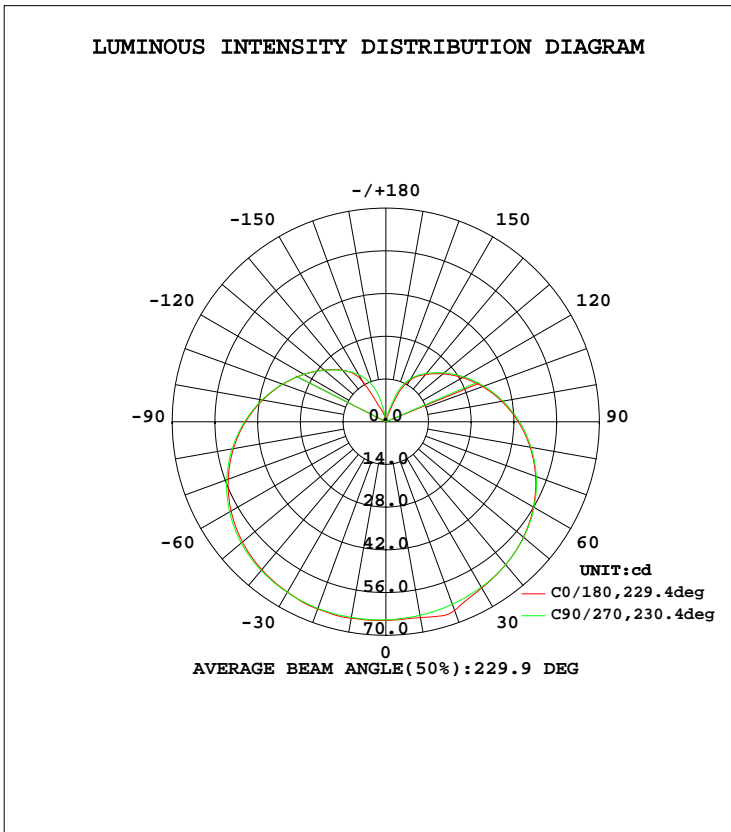


LUMINAIRE PHOTOMETRIC TEST REPORT

Test:U:230.3V I:0.0520A P:6.650W PF:0.5500 Lamp Flux:100000x1 lm		
NAME: A60-006T010VW-29	TYPE:球泡灯	WEIGHT:
SPEC.:A60-006T010VW-29	DIM.:	SERIAL No.:E01-20160112-08
MFR.: 深圳市兆驰光电有限公司	SUR.:	PROTECTION ANGLE:

DATA OF LAMP		PHOTOMETRIC DATA Eff: 80.61 lm/W			
MODEL	A60-006T010VW-29	Imax(cd)	66.32	S/MH(C0/180)	1.46
NOMINAL POWER(W)	1000	LOR(%)	0.5	S/MH(C90/270)	1.46
RATED VOLTAGE(V)	220.0	TOTAL FLUX(lm)	536.06	η UP, DN(C0-180)	0.1,0.2
NOMINAL FLUX(lm)	100000	CIE CLASS	SEMI-D.	η UP, DN(C180-360)	0.1,0.2
LAMPS INSIDE	1	η up(%)	0.2	CIBSE SHR NOM	1.75
TEST VOLTAGE(V)	220.2	η down(%)	0.4	CIBSE SHR MAX	1.75



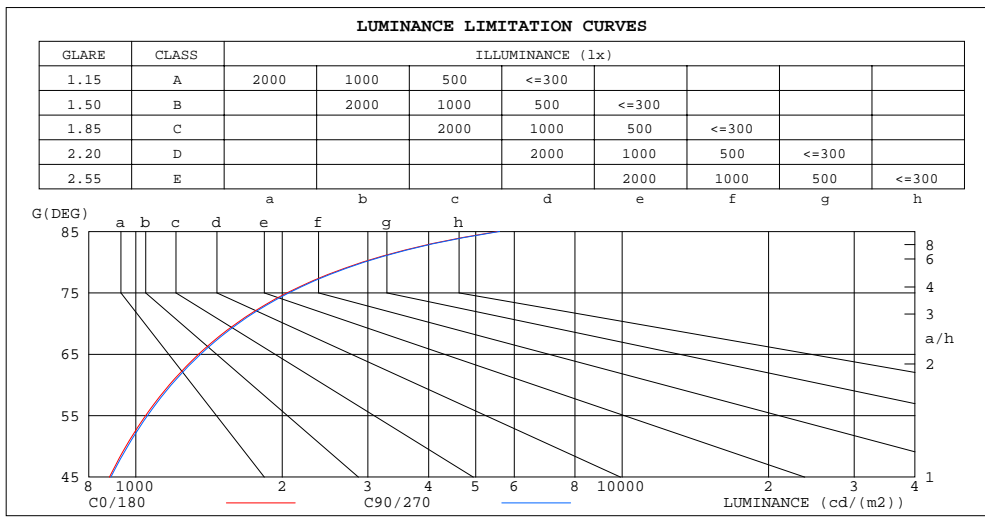
C Range: 0 - 360DEG
 C Interval: 90.0DEG
 Test Speed: HIGH
 Temperature:25.3DEG
 Operators:
 Test Date:2016-01-09

γ Range: 0 - 180DEG
 γ Interval: 1.0DEG
 Test System:EVERFINE GO-2000A_V1 SYSTEM V2.0.287
 Humidity:65.0%
 Test Distance:7.800m [K=1.0000]
 Remarks: A60-006T010VW-29

ZONAL FLUX DIAGRAM
AND LUMINANCE LIMITATION CURVES

ZONAL FLUX DIAGRAM:

γ	C0	C90	C180	C270				γ	Φ zone	Φ total	Φ lum,lamp
10	65.41	65.15	65.19	64.41				0- 10	6.203	6.203	1.16,0.01
20	65.30	65.10	65.81	63.68				10- 20	18.46	24.67	4.6,0.02
30	64.50	64.60	62.91	62.58				20- 30	29.74	54.40	10.1,0.05
40	63.27	63.61	61.11	61.10				30- 40	39.56	93.96	17.5,0.09
50	61.34	61.85	58.86	58.95				40- 50	47.47	141.4	26.4,0.14
60	58.58	59.12	55.86	56.05				50- 60	52.82	194.3	36.2,0.19
70	54.99	55.51	52.20	52.46				60- 70	55.23	249.5	46.5,0.25
80	50.73	51.15	48.01	48.33				70- 80	54.70	304.2	56.7,0.30
90	46.00	46.32	43.41	43.79				80- 90	51.54	355.7	66.4,0.36
100	41.03	41.24	38.61	39.02				90-100	46.31	402.0	75,0.40
110	35.99	36.11	33.75	34.22				100-110	39.69	441.7	82.4,0.44
120	31.07	31.09	28.98	29.47				110-120	32.37	474.1	88.4,0.47
130	26.39	26.32	24.43	24.92				120-130	24.99	499.1	93.1,0.50
140	22.04	21.91	20.24	20.69				130-140	18.12	517.2	96.5,0.52
150	15.08	17.81	15.66	16.26				140-150	11.99	529.2	98.7,0.53
160	4.142	12.47	3.990	8.056				150-160	5.600	534.8	99.8,0.53
170	0.8826	2.772	0.8463	0.8365				160-170	1.187	536.0	100,0.54
180	0.9138	0.9042	0.9170	0.9042				170-180	0.0943	536.1	100,0.54
DEG	LUMINOUS INTENSITY:cd								UNIT:lm		



LUMINANCE cd/(m2)		
G(DEG)	C0/180	C90/270
85	5555	5596
80	2921	2945
75	2045	2063
70	1608	1623
65	1346	1359
60	1172	1182
55	1047	1057
50	954	962
45	883	889

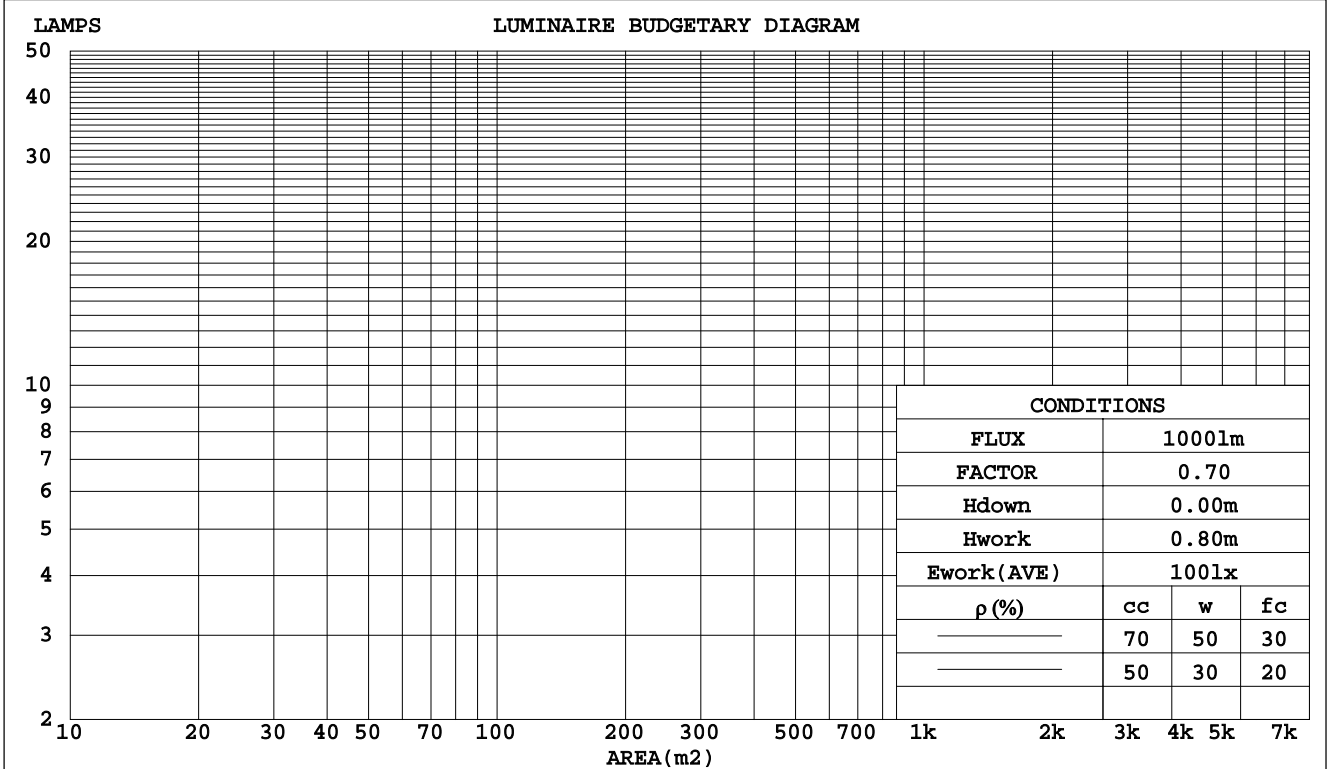
C Range: 0 - 360DEG
C Interval: 90.0DEG
Test Speed: HIGH
Temperature:25.3DEG
Operators:
Test Date:2016-01-09

γ Range: 0 - 180DEG
 γ Interval: 1.0DEG
Test System:EVERFINE GO-2000A_V1 SYSTEM V2.0.287
Humidity:65.0%
Test Distance:7.800m [K=1.0000]
Remarks: A60-006T010VW-29

CU AND LUMINAIRE BUDGETARY ESTIMATE DIAGRAM

Test:U:230.3V I:0.0520A P:6.650W PF:0.5500 Lamp Flux:100000x1 lm		
NAME: A60-006T010VW-29	TYPE:球泡灯	WEIGHT:
SPEC.:A60-006T010VW-29	DIM.:	SERIAL No.:E01-20160112-08
MFR.: 深圳市兆驰光电有限公司	SUR.:	PROTECTION ANGLE:

pcc	80%			70%			50%			30%			10%			0
pw	50%	30%	10%	50%	30%	10%	50%	30%	10%	50%	30%	10%	50%	30%	10%	0
pfc	20%			20%			20%			20%			20%			0
RCR	RCR:Room Cavity Ratio						Coefficients of Utilization(CU)									
0.0	.01	.01	.01	.01	.01	.01	.00	.00	.00	.00	.00	.00	.00	.00	.00	.00
1.0	.00	.00	.00	.00	.00	.00	.00	.00	.00	.00	.00	.00	.00	.00	.00	.00
2.0	.00	.00	.00	.00	.00	.00	.00	.00	.00	.00	.00	.00	.00	.00	.00	.00
3.0	.00	.00	.00	.00	.00	.00	.00	.00	.00	.00	.00	.00	.00	.00	.00	.00
4.0	.00	.00	.00	.00	.00	.00	.00	.00	.00	.00	.00	.00	.00	.00	.00	.00
5.0	.00	.00	.00	.00	.00	.00	.00	.00	.00	.00	.00	.00	.00	.00	.00	.00
6.0	.00	.00	.00	.00	.00	.00	.00	.00	.00	.00	.00	.00	.00	.00	.00	.00
7.0	.00	.00	.00	.00	.00	.00	.00	.00	.00	.00	.00	.00	.00	.00	.00	.00
8.0	.00	.00	.00	.00	.00	.00	.00	.00	.00	.00	.00	.00	.00	.00	.00	.00
9.0	.00	.00	.00	.00	.00	.00	.00	.00	.00	.00	.00	.00	.00	.00	.00	.00
10.0	.00	.00	.00	.00	.00	.00	.00	.00	.00	.00	.00	.00	.00	.00	.00	.00



C Range: 0 - 360DEG
 C Interval: 90.0DEG
 Test Speed: HIGH
 Temperature:25.3DEG
 Operators:
 Test Date:2016-01-09

γ Range: 0 - 180DEG
 γ Interval: 1.0DEG
 Test System:EVERFINE GO-2000A_V1 SYSTEM V2.0.287
 Humidity:65.0%
 Test Distance:7.800m [K=1.0000]
 Remarks: A60-006T010VW-29

WEC AND CCEC

Test:U:230.3V I:0.0520A P:6.650W PF:0.5500 Lamp Flux:100000x1 lm		
NAME: A60-006T010VW-29	TYPE:球泡灯	WEIGHT:
SPEC.:A60-006T010VW-29	DIM.:	SERIAL No.:E01-20160112-08
MFR.: 深圳市兆驰光电有限公司	SUR.:	PROTECTION ANGLE:

ρcc	80%			70%			50%			30%			10%			0
ρw	50%	30%	10%	50%	30%	10%	50%	30%	10%	50%	30%	10%	50%	30%	10%	0
ρfc	20%			20%			20%			20%			20%			0
RCR	RCR:Room Cavity Ratio						Wall Exitance Coefficients(WEC)									
0.0																
1.0	.002	.001	.000	.002	.001	.000	.002	.001	.000	.002	.001	.000	.002	.001	.000	
2.0	.002	.001	.000	.002	.001	.000	.002	.001	.000	.001	.001	.000	.001	.001	.000	
3.0	.002	.001	.000	.002	.001	.000	.001	.001	.000	.001	.001	.000	.001	.001	.000	
4.0	.001	.001	.000	.001	.001	.000	.001	.001	.000	.001	.001	.000	.001	.001	.000	
5.0	.001	.001	.000	.001	.001	.000	.001	.001	.000	.001	.001	.000	.001	.000	.000	
6.0	.001	.001	.000	.001	.001	.000	.001	.001	.000	.001	.000	.000	.001	.000	.000	
7.0	.001	.001	.000	.001	.001	.000	.001	.000	.000	.001	.000	.000	.001	.000	.000	
8.0	.001	.000	.000	.001	.000	.000	.001	.000	.000	.001	.000	.000	.001	.000	.000	
9.0	.001	.000	.000	.001	.000	.000	.001	.000	.000	.001	.000	.000	.001	.000	.000	
10.0	.001	.000	.000	.001	.000	.000	.001	.000	.000	.001	.000	.000	.001	.000	.000	

ρcc	80%			70%			50%			30%			10%			0
ρw	50%	30%	10%	50%	30%	10%	50%	30%	10%	50%	30%	10%	50%	30%	10%	0
ρfc	20%			20%			20%			20%			20%			0
RCR	RCR:Room Cavity Ratio						Ceiling Cavity Exitance Coefficients(CCEC)									
0.0	.002	.002	.002	.002	.002	.002	.001	.001	.001	.001	.001	.001	.000	.000	.000	
1.0	.002	.002	.002	.002	.002	.002	.001	.001	.001	.001	.001	.001	.000	.000	.000	
2.0	.002	.002	.002	.002	.002	.002	.001	.001	.001	.001	.001	.001	.000	.000	.000	
3.0	.002	.002	.002	.002	.002	.002	.001	.001	.001	.001	.001	.001	.000	.000	.000	
4.0	.002	.002	.002	.002	.002	.001	.001	.001	.001	.001	.001	.001	.000	.000	.000	
5.0	.002	.002	.002	.002	.002	.001	.001	.001	.001	.001	.001	.001	.000	.000	.000	
6.0	.002	.002	.002	.002	.002	.001	.001	.001	.001	.001	.001	.001	.000	.000	.000	
7.0	.002	.002	.002	.002	.002	.001	.001	.001	.001	.001	.001	.001	.000	.000	.000	
8.0	.002	.002	.002	.002	.002	.001	.001	.001	.001	.001	.001	.001	.000	.000	.000	
9.0	.002	.002	.002	.002	.002	.001	.001	.001	.001	.001	.001	.001	.000	.000	.000	
10.0	.002	.002	.002	.002	.002	.001	.001	.001	.001	.001	.001	.001	.000	.000	.000	

C Range: 0 - 360DEG
C Interval: 90.0DEG
Test Speed: HIGH
Temperature:25.3DEG
Operators:
Test Date:2016-01-09

γ Range: 0 - 180DEG
γ Interval: 1.0DEG
Test System:EVERFINE GO-2000A_V1 SYSTEM V2.0.287
Humidity:65.0%
Test Distance:7.800m [K=1.0000]
Remarks: A60-006T010VW-29

UGR(Unified Glare Rating) Table

Test:U:230.3V I:0.0520A P:6.650W PF:0.5500 Lamp Flux:100000x1 lm										
NAME: A60-006T010VW-29					TYPE:球泡灯			WEIGHT:		
SPEC.:A60-006T010VW-29					DIM.:			SERIAL No.:E01-20160112-08		
MFR.: 深圳市兆驰光电有限公司					SUR.:			PROTECTION ANGLE:		
ceiling/cavity	0.7	0.7	0.5	0.5	0.3	0.7	0.7	0.5	0.5	0.3
walls	0.5	0.3	0.5	0.3	0.3	0.5	0.3	0.5	0.3	0.3
working plane	0.2	0.2	0.2	0.2	0.2	0.2	0.2	0.2	0.2	0.2
Room dimensions	Viewed crosswise					Viewed endwise				
x = 2H y = 2H	11.1	12.3	11.8	13.1	13.9	11.1	12.4	11.8	13.1	14.0
3H	14.0	15.1	14.7	15.9	16.8	14.0	15.2	14.8	15.9	16.8
4H	15.6	16.7	16.4	17.5	18.4	15.7	16.8	16.4	17.5	18.4
6H	17.4	18.4	18.2	19.2	20.2	17.5	18.5	18.2	19.3	20.2
8H	18.4	19.4	19.2	20.2	21.1	18.5	19.4	19.2	20.2	21.2
12H	19.6	20.5	20.3	21.3	22.3	19.6	20.6	20.4	21.4	22.3
4H 2H	12.0	13.1	12.8	13.9	14.8	12.1	13.1	12.8	13.9	14.8
3H	15.1	16.0	15.9	16.8	17.8	15.1	16.1	15.9	16.9	17.8
4H	16.8	17.7	17.6	18.5	19.5	16.9	17.8	17.7	18.6	19.6
6H	18.8	19.6	19.6	20.4	21.4	18.8	19.6	19.7	20.5	21.5
8H	19.9	20.6	20.7	21.5	22.5	19.9	20.7	20.8	21.5	22.6
12H	21.2	21.8	22.0	22.7	23.7	21.2	21.9	22.0	22.7	23.8
8H 4H	17.5	18.2	18.3	19.1	20.1	17.5	18.3	18.4	19.1	20.2
6H	19.7	20.4	20.6	21.2	22.3	19.8	20.4	20.6	21.3	22.3
8H	21.0	21.6	21.9	22.5	23.6	21.1	21.6	21.9	22.5	23.6
12H	22.5	23.0	23.4	23.9	25.0	22.5	23.0	23.4	23.9	25.0
12H 4H	17.7	18.4	18.5	19.2	20.3	17.7	18.4	18.6	19.2	20.3
6H	20.0	20.6	20.9	21.5	22.6	20.1	20.6	20.9	21.5	22.6
8H	21.4	21.9	22.3	22.8	23.9	21.5	22.0	22.3	22.8	24.0
Variations with the observer position at spacings:										
S = 1.0H	+ 0.1 / - 0.1					+ 0.1 / - 0.1				
1.5H	+ 0.2 / - 0.3					+ 0.2 / - 0.3				
2.0H	+ 0.3 / - 0.4					+ 0.3 / - 0.4				

CIE Pub.117 Corrected 100000 lm Total Lamp Luminous Flux.(8log(F/F0) = 16.0)

C Range: 0 - 360DEG
C Interval: 90.0DEG
Test Speed: HIGH
Temperature:25.3DEG
Operators:
Test Date:2016-01-09

γ Range: 0 - 180DEG
γ Interval: 1.0DEG
Test System:EVERFINE GO-2000A_V1 SYSTEM V2.0.287
Humidity:65.0%
Test Distance:7.800m [K=1.0000]
Remarks: A60-006T010VW-29

UTILIZATION FACTORS TABLE

Test:U:230.3V I:0.0520A P:6.650W PF:0.5500 Lamp Flux:100000x1 lm		
NAME: A60-006T010VW-29	TYPE:球泡灯	WEIGHT:
SPEC.:A60-006T010VW-29	DIM.:	SERIAL No.:E01-20160112-08
MFR.: 深圳市兆驰光电有限公司	SUR.:	PROTECTION ANGLE:

REFLECTANCE										
Ceiling	0.8	0.8	0.8	0.7	0.7	0.7	0.5	0.5	0.5	0
Walls	0.7	0.5	0.3	0.7	0.5	0.3	0.7	0.5	0.3	0
Working plane	0.2	0.2	0.2	0.2	0.2	0.2	0.2	0.2	0.2	0
ROOM INDEX	UTILIZATION FACTORS(PERCENT) k(RI) x RCR = 5									
k = 0.60	0	0	0	0	0	0	0	0	0	0
0.80	0	0	0	0	0	0	0	0	0	0
1.00	0	0	0	0	0	0	0	0	0	0
1.25	0	0	0	0	0	0	0	0	0	0
1.50	0	0	0	0	0	0	0	0	0	0
2.00	0	0	0	0	0	0	0	0	0	0
2.50	0	0	0	0	0	0	0	0	0	0
3.00	0	0	0	0	0	0	0	0	0	0
4.00	0	0	0	0	0	0	0	0	0	0
5.00	1	0	0	0	0	0	0	0	0	0
ROOM INDEX	UF(total)									Direct
According to DIN EN 13032-2 2004			Suspended				SHRNOM = 1.25			

C Range: 0 - 360DEG
C Interval: 90.0DEG
Test Speed: HIGH
Temperature:25.3DEG
Operators:
Test Date:2016-01-09

γ Range: 0 - 180DEG
γ Interval: 1.0DEG
Test System:EVERFINE GO-2000A_V1 SYSTEM V2.0.287
Humidity:65.0%
Test Distance:7.800m [K=1.0000]
Remarks: A60-006T010VW-29

ISOCANDELA DIAGRAM

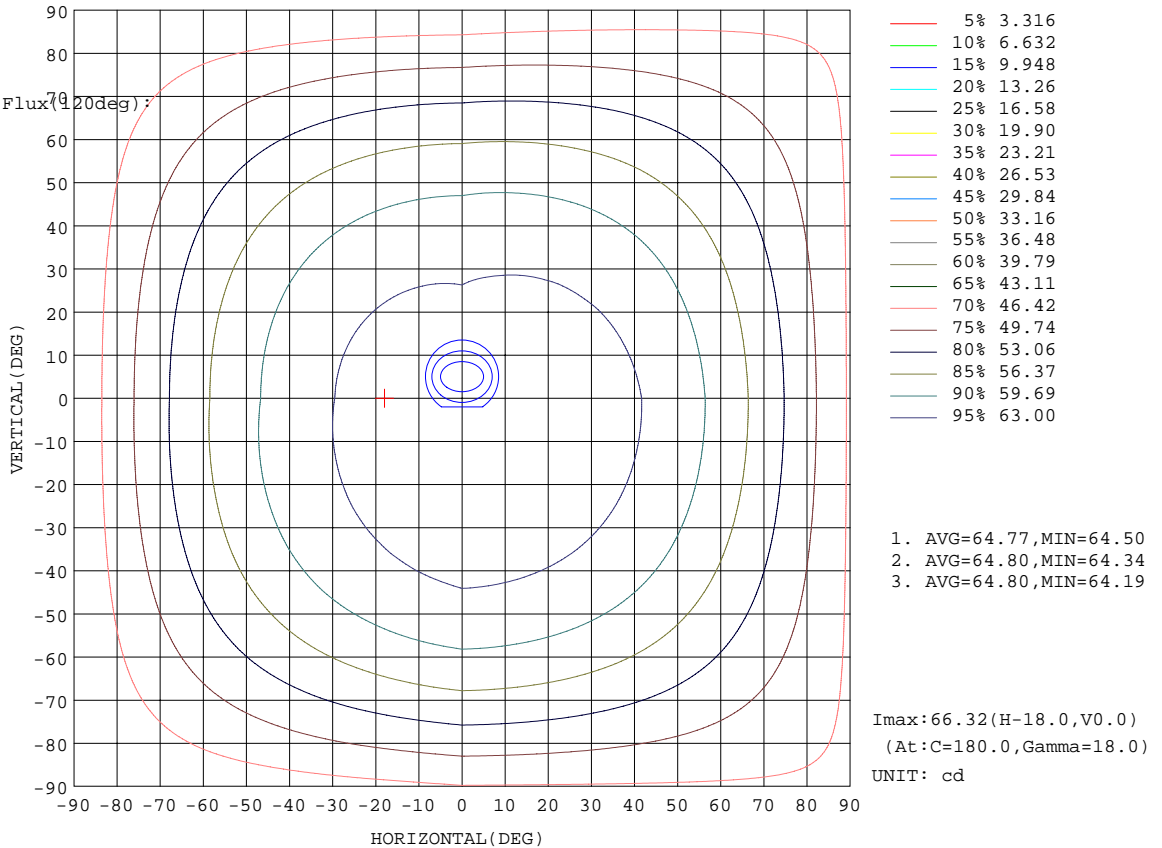
Test:U:230.3V I:0.0520A P:6.650W PF:0.5500 Lamp Flux:100000x1 lm		
NAME: A60-006T010VW-29	TYPE:球泡灯	WEIGHT:
SPEC.:A60-006T010VW-29	DIM.:	SERIAL No.:E01-20160112-08
MFR.: 深圳市兆驰光电有限公司	SUR.:	PROTECTION ANGLE:

Conical surface Flux(90deg):

116.86 lm
%lum = 21.8%
%lamp = 0.1%

Conical surface Flux(70deg):

194.25 lm
%lum = 36.2%
%lamp = 0.2%

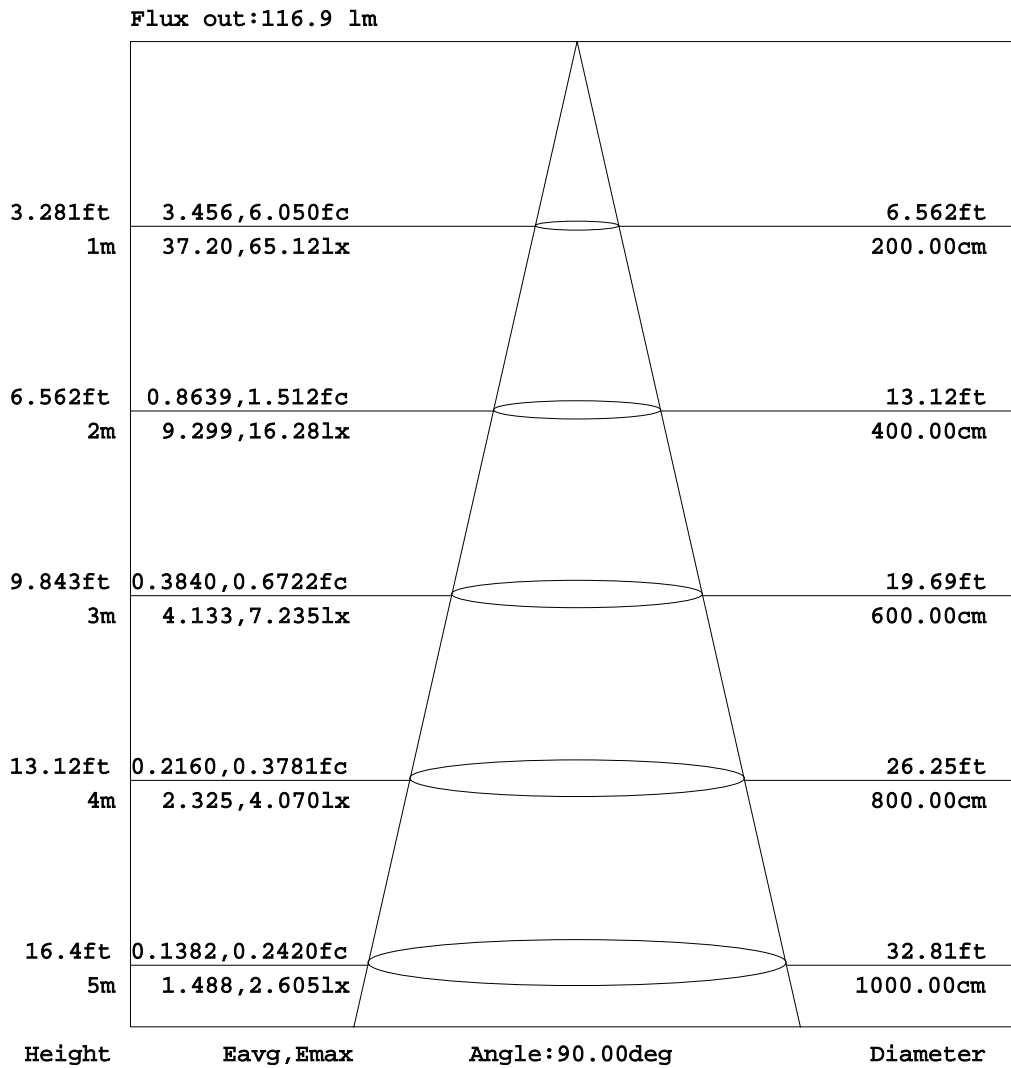


C Range: 0 - 360DEG
C Interval: 90.0DEG
Test Speed: HIGH
Temperature:25.3DEG
Operators:
Test Date:2016-01-09

γ Range: 0 - 180DEG
γ Interval: 1.0DEG
Test System:EVERFINE GO-2000A_V1 SYSTEM V2.0.287
Humidity:65.0%
Test Distance:7.800m [K=1.0000]
Remarks: A60-006T010VW-29

AAI Figure

Test:U:230.3V I:0.0520A P:6.650W PF:0.5500 Lamp Flux:100000x1 lm		
NAME: A60-006T010VW-29	TYPE:球泡灯	WEIGHT:
SPEC.:A60-006T010VW-29	DIM.:	SERIAL No.:E01-20160112-08
MFR.: 深圳市兆驰光电有限公司	SUR.:	PROTECTION ANGLE:



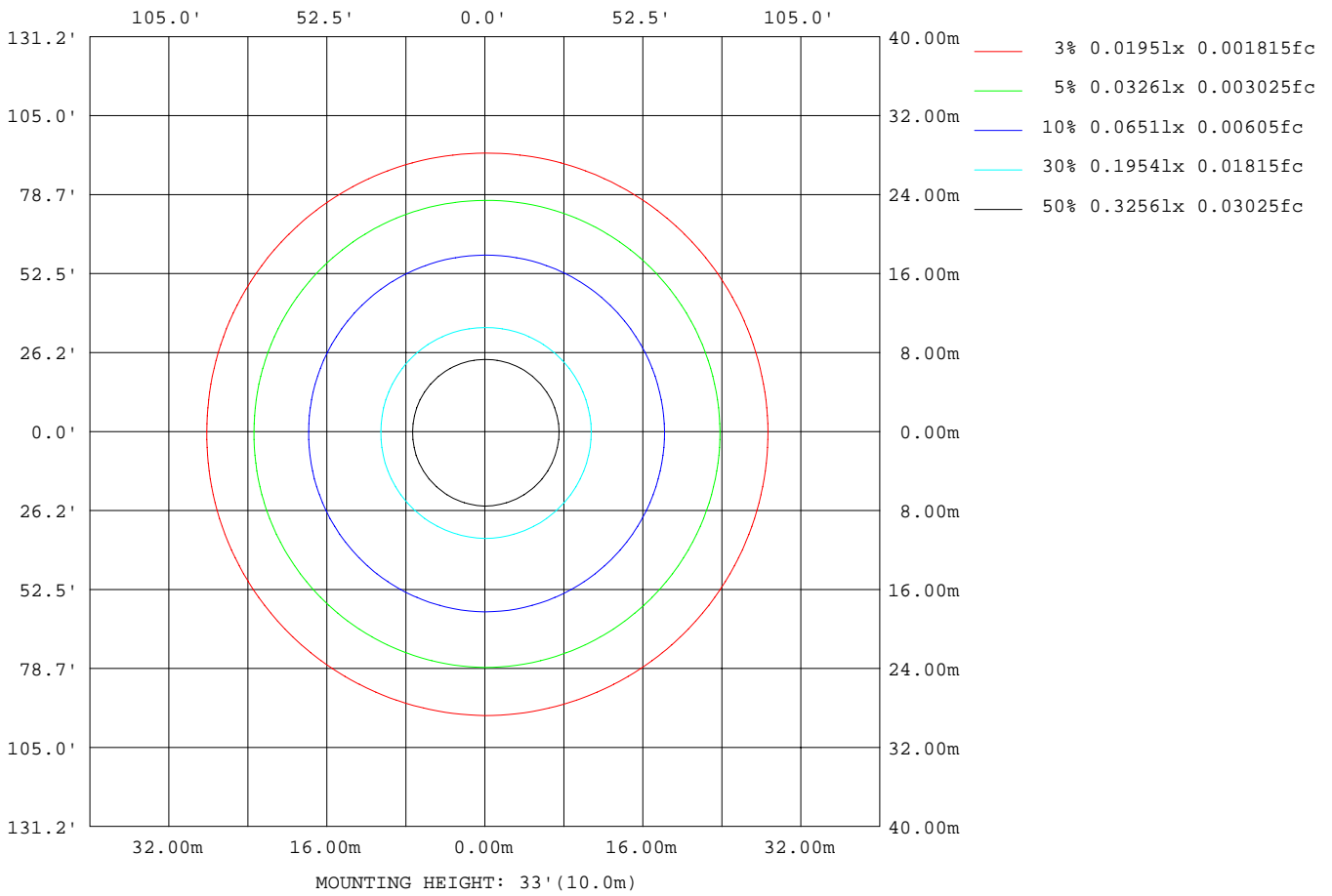
Note:The Curves indicate the illuminated area and the average illumination when the luminaire is at different distance.

C Range: 0 - 360DEG
C Interval: 90.0DEG
Test Speed: HIGH
Temperature:25.3DEG
Operators:
Test Date:2016-01-09

γ Range: 0 - 180DEG
γ Interval: 1.0DEG
Test System:EVERFINE GO-2000A_V1 SYSTEM V2.0.287
Humidity:65.0%
Test Distance:7.800m [K=1.0000]
Remarks: A60-006T010VW-29

ISOLUX DIAGRAM

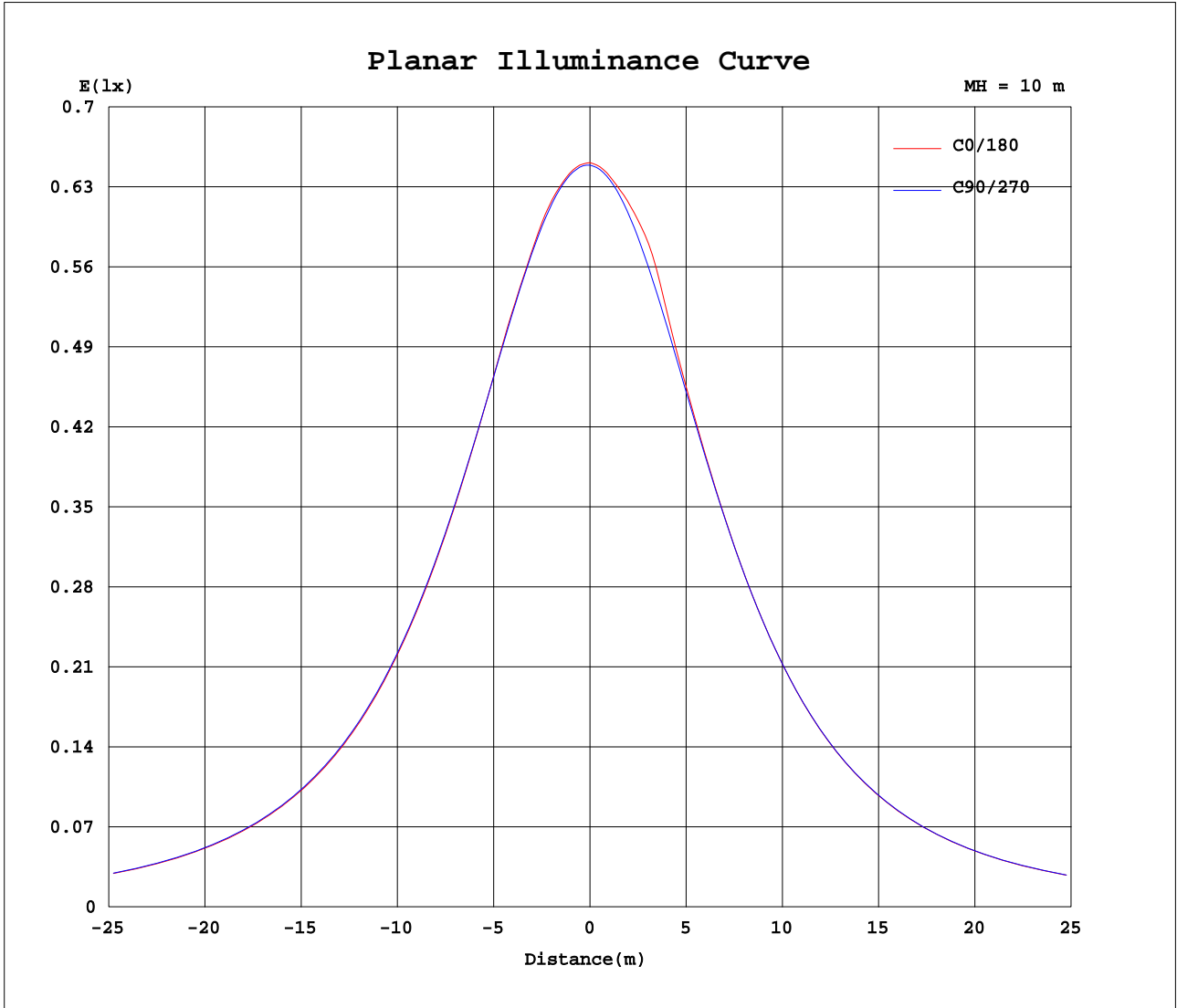
Test:U:230.3V I:0.0520A P:6.650W PF:0.5500 Lamp Flux:100000x1 lm		
NAME: A60-006T010VW-29	TYPE:球泡灯	WEIGHT:
SPEC.:A60-006T010VW-29	DIM.:	SERIAL No.:E01-20160112-08
MFR.: 深圳市兆驰光电有限公司	SUR.:	PROTECTION ANGLE:



C Range: 0 - 360DEG
C Interval: 90.0DEG
Test Speed: HIGH
Temperature:25.3DEG
Operators:
Test Date:2016-01-09

γ Range: 0 - 180DEG
γ Interval: 1.0DEG
Test System:EVERFINE GO-2000A_V1 SYSTEM V2.0.287
Humidity:65.0%
Test Distance:7.800m [K=1.0000]
Remarks: A60-006T010VW-29

Planar Illuminance Curve



C Range: 0 - 360DEG
C Interval: 90.0DEG
Test Speed: HIGH
Temperature: 25.3DEG
Operators:
Test Date: 2016-01-09

γ Range: 0 - 180DEG
γ Interval: 1.0DEG
Test System: EVERFINE GO-2000A_V1 SYSTEM V2.0.287
Humidity: 65.0%
Test Distance: 7.800m [K=1.0000]
Remarks: A60-006T010VW-29

LUMINOUS DISTRIBUTION INTENSITY DATA

Test:U:230.3V I:0.0520A P:6.650W PF:0.5500 Lamp Flux:100000x1 lm		
NAME: A60-006T010VW-29	TYPE:球泡灯	WEIGHT:
SPEC.:A60-006T010VW-29	DIM.:	SERIAL No.:E01-20160112-08
MFR.: 深圳市兆驰光电有限公司	SUR.:	PROTECTION ANGLE:

Table--1

UNIT: cd

C(DEG) γ (DEG)	0	90	180	270															
0	65.1	64.9	65.1	64.9															
5	65.2	65.0	65.0	64.7															
10	65.4	65.1	65.2	64.4															
15	65.5	65.2	66.0	64.1															
20	65.3	65.1	65.8	63.7															
25	65.1	64.9	64.0	63.2															
30	64.5	64.6	62.9	62.6															
35	63.9	64.2	62.0	61.9															
40	63.3	63.6	61.1	61.1															
45	62.4	62.8	60.1	60.1															
50	61.3	61.8	58.9	59.0															
55	60.1	60.6	57.4	57.6															
60	58.6	59.1	55.9	56.0															
65	56.9	57.4	54.1	54.3															
70	55.0	55.5	52.2	52.5															
75	52.9	53.4	50.2	50.4															
80	50.7	51.1	48.0	48.3															
85	48.4	48.8	45.8	46.1															
90	46.0	46.3	43.4	43.8															
95	43.5	43.8	41.0	41.4															
100	41.0	41.2	38.6	39.0															
105	38.5	38.7	36.2	36.6															
110	36.0	36.1	33.8	34.2															
115	33.5	33.6	31.4	31.8															
120	31.1	31.1	29.0	29.5															
125	28.7	28.7	26.7	27.2															
130	26.4	26.3	24.4	24.9															
135	24.2	24.1	22.3	22.8															
140	22.0	21.9	20.2	20.7															
145	19.6	19.9	18.3	18.6															
150	15.1	17.8	15.7	16.3															
155	6.87	15.4	11.7	13.3															
160	4.14	12.5	3.99	8.06															
165	2.42	8.28	1.43	3.67															
170	0.88	2.77	0.85	0.84															
175	0.89	0.89	0.88	0.87															
180	0.91	0.90	0.92	0.90															

C Range: 0 - 360DEG
 C Interval: 90.0DEG
 Test Speed: HIGH
 Temperature:25.3DEG
 Operators:
 Test Date:2016-01-09

γ Range: 0 - 180DEG
 γ Interval: 1.0DEG
 Test System:EVERFINE GO-2000A_V1 SYSTEM V2.0.287
 Humidity:65.0%
 Test Distance:7.800m [K=1.0000]
 Remarks: A60-006T010VW-29

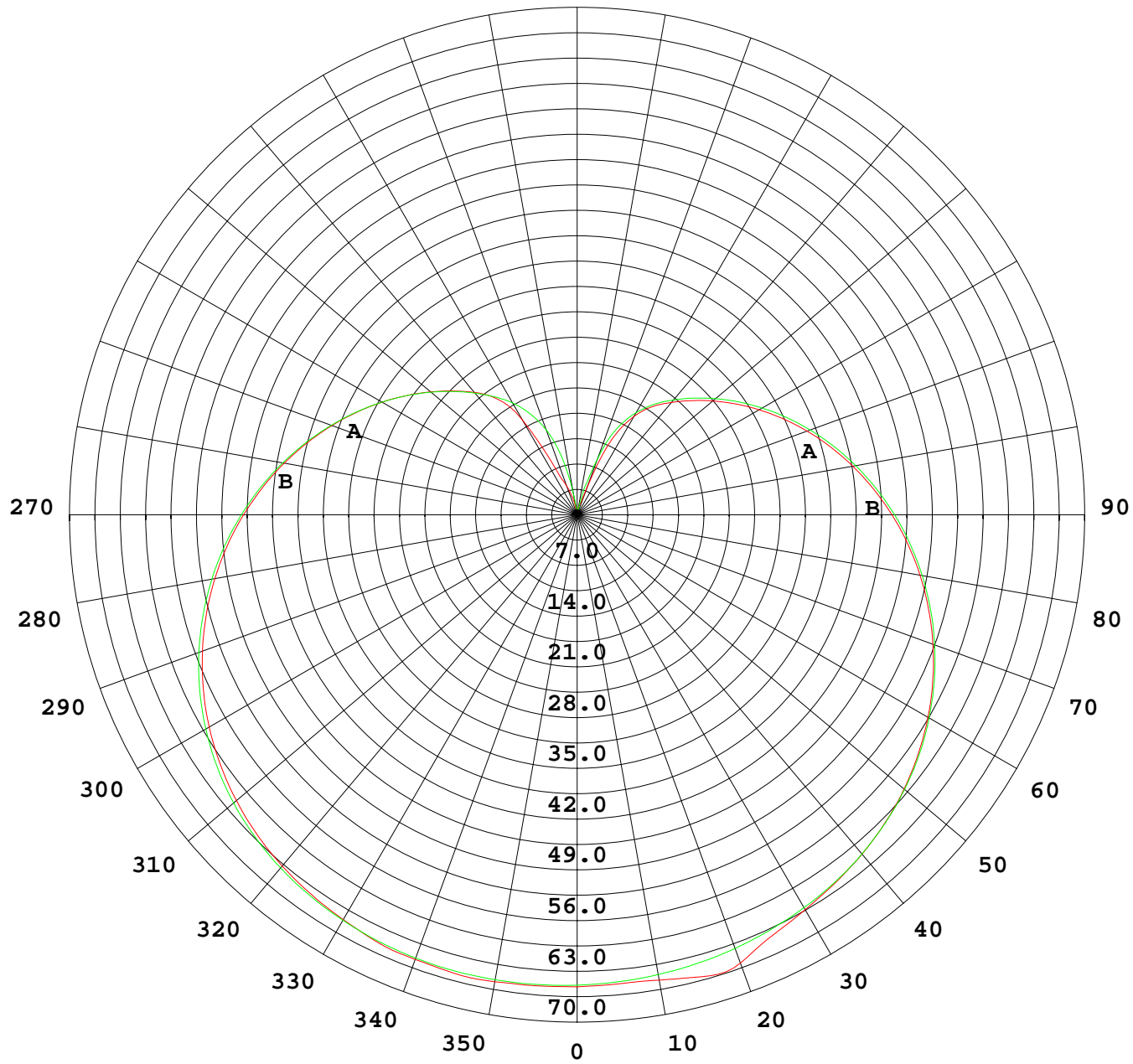
Photometric Data Table [cd]

G/C	0.0	90.0	180.0	270.0
0.0	65.12	64.90	65.12	64.90
3.0	65.17	64.99	65.02	64.78
6.0	65.25	65.08	64.94	64.64
9.0	65.35	65.12	65.06	64.47
12.0	65.52	65.15	65.46	64.29
15.0	65.49	65.16	65.99	64.07
18.0	65.32	65.14	66.32	63.85
21.0	65.27	65.06	65.41	63.56
24.0	65.19	64.95	64.23	63.26
27.0	64.84	64.79	63.51	62.94
30.0	64.50	64.60	62.91	62.58
33.0	64.18	64.38	62.36	62.19
36.0	63.82	64.09	61.84	61.75
39.0	63.42	63.75	61.31	61.28
42.0	62.95	63.33	60.72	60.72
45.0	62.42	62.84	60.07	60.12
48.0	61.80	62.29	59.38	59.45
51.0	61.12	61.63	58.59	58.70
54.0	60.34	60.88	57.75	57.89
57.0	59.51	60.05	56.84	57.02
60.0	58.58	59.12	55.86	56.05
63.0	57.60	58.14	54.84	55.06
66.0	56.51	57.06	53.75	53.98
69.0	55.37	55.91	52.59	52.85
72.0	54.19	54.67	51.41	51.67
75.0	52.93	53.39	50.16	50.44
78.0	51.62	52.07	48.90	49.19
81.0	50.27	50.70	47.59	47.88
84.0	48.88	49.27	46.21	46.54
87.0	47.46	47.80	44.82	45.17
90.0	46.00	46.32	43.41	43.79
93.0	44.52	44.81	41.98	42.37
96.0	43.04	43.28	40.54	40.94
99.0	41.53	41.75	39.09	39.51
102.0	40.02	40.20	37.64	38.06
105.0	38.51	38.67	36.18	36.62
108.0	37.00	37.14	34.73	35.18
111.0	35.50	35.59	33.27	33.74
114.0	34.01	34.07	31.83	32.31
117.0	32.54	32.57	30.39	30.88
120.0	31.07	31.09	28.98	29.47
123.0	29.64	29.62	27.59	28.08
126.0	28.22	28.20	26.21	26.72
129.0	26.85	26.79	24.87	25.37
132.0	25.48	25.41	23.56	24.05
135.0	24.16	24.06	22.28	22.76
138.0	22.88	22.76	21.05	21.50
141.0	21.64	21.50	19.85	20.28
144.0	20.20	20.27	18.68	19.06
147.0	18.38	19.07	17.34	17.72
150.0	15.08	17.81	15.66	16.26
153.0	9.940	16.41	13.58	14.59
156.0	5.728	14.85	10.62	12.56
159.0	4.606	13.11	5.646	9.381
162.0	3.482	11.00	1.941	5.788
165.0	2.418	8.281	1.431	3.670
168.0	1.345	4.885	1.182	0.8301
171.0	0.8849	1.959	0.8495	0.8430
174.0	0.8945	0.8881	0.8720	0.8655
177.0	0.9010	0.8977	0.8978	0.8849
180.0	0.9138	0.9042	0.9170	0.9042

C Range: 0 - 360DEG
 C Interval: 90.0DEG
 Test Speed: HIGH
 Temperature: 25.3DEG
 Operators:
 Test Date: 2016-01-09

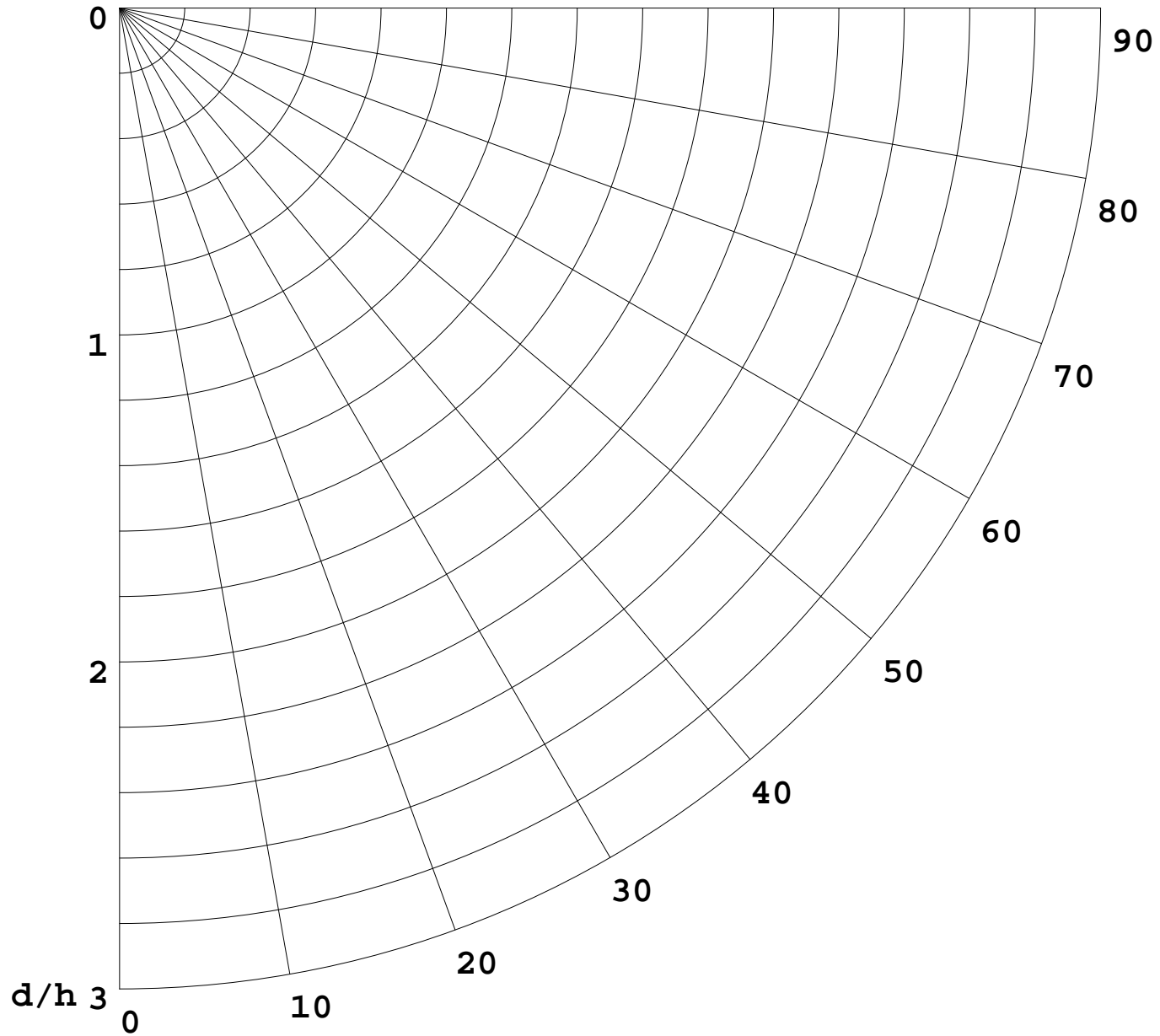
γ Range: 0 - 180DEG
 γ Interval: 1.0DEG
 Test System: EVERFINE GO-2000A_V1 SYSTEM V2.0.287
 Humidity: 65.0%
 Test Distance: 7.800m [K=1.0000]
 Remarks: A60-006T010VW-29

I(cd)



1000 lm

$\kappa = 1$



F = 1000 lm
K = 0.7
Hcc = 0.8 m
Hfc = 0.0 m
Eave = 100 lx

	Pcc	Pw	Pfc
—————	70	50	30
—————	50	30	20

